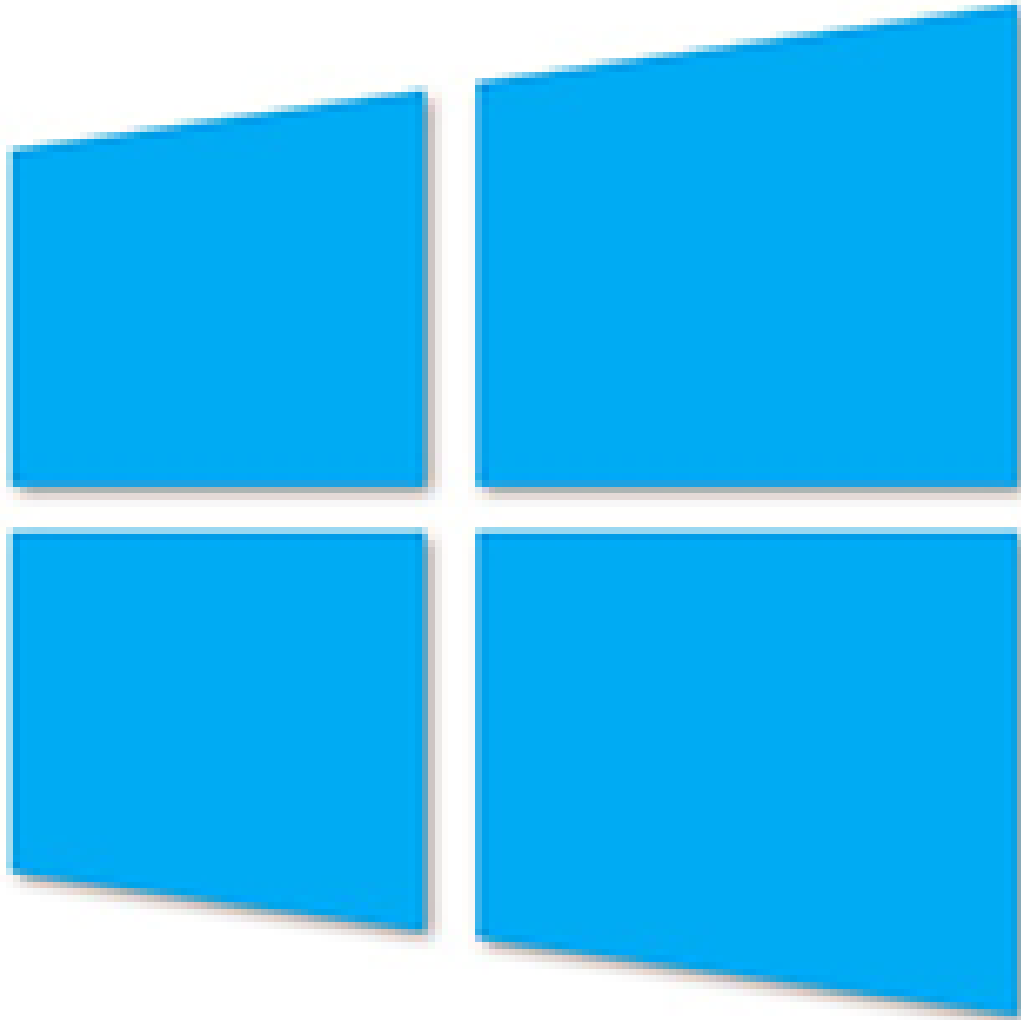
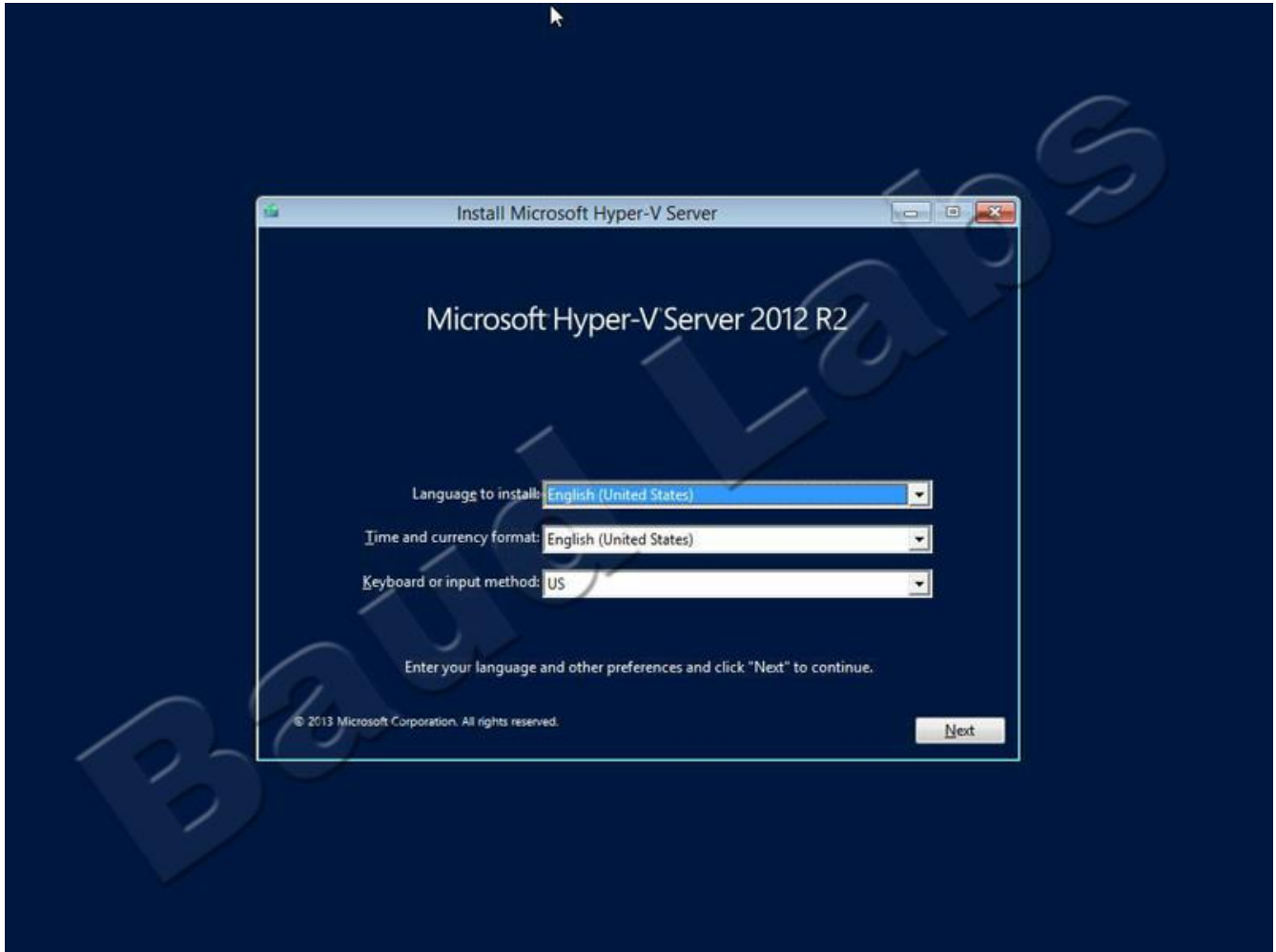


# Windows Server Hyper-V





Jaaaa. Her ser du så en standard Installations GUI for et OS. Når du har valgt sprog og tid samt Keyboard layout Når dette er gjort kan man hvis man føler sig klar trykke Next.

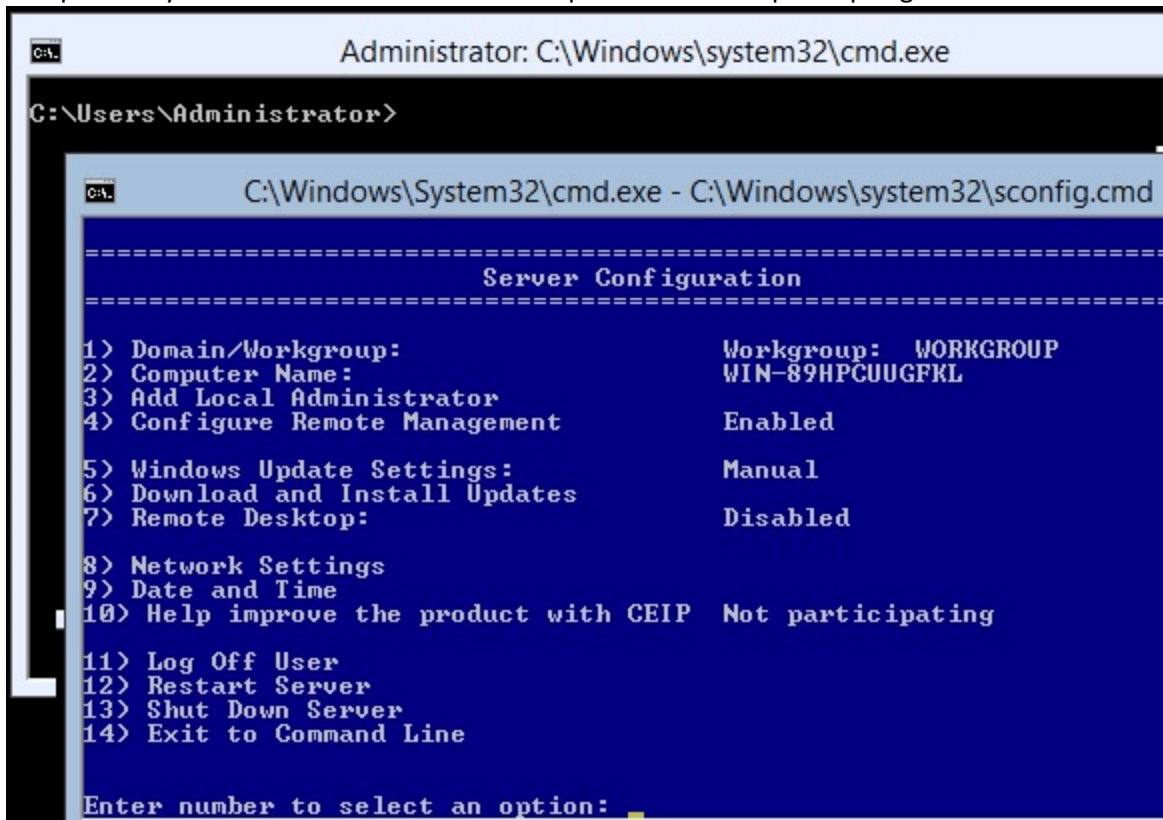


### 1. RETAIL LICENSE TERMS

These license terms are an agreement between Microsoft Corporation (or based on where you live, one of its affiliates) and you. Please read them. They apply to the software named above, which includes the media on which you

Next

Jaaa. Her skal du så først trykke på Install knappen, der efter kommer der nogle "Terms of use" du skal acceptere. Tryk derefter Next Hvis du er sikker på du har modet på at springe ud i det.



Når det hele er færdig installeret vil du nu se denne boks som er set ovenfor. Dette er en Commandoprompt hvor du har mulighed for at køre lidt forskellige commands,

```
Administrator: C:\Windows\system32\cmd.exe
C:\Users\Administrator>

C:\Windows\System32\cmd.exe - C:\Windows\system32\sconfig.cmd
8) Network Settings
9) Date and Time
10) Do not display this menu at login
11) Failover Clustering Feature          Disabled
12) Log Off User
13) Restart Server
14) Shut Down Server
15) Exit to Command Line

Enter number to select an option: 8

-----
Network settings
-----

Available Network Adapters

Index#   IP address      Description
-----
0        192.168.0.174   Intel(R) PRO/1000 MT Network Connection

Select Network Adapter Index# (Blank=Cancel):
```

Hvis du trykker 8 i commando prompten får du "Network Settings" op. Hvor du kan se din IP samt Configureret det så du kan lave static ip adress samt Default gateway og DNS server

```
Administrator: C:\Windows\system32\cmd.exe
C:\Users\Administrator>

C:\Windows\System32\cmd.exe - C:\Windows\system32\sconfig.cmd
8) Network Settings
9) Date and Time
10) Do not display this menu
11) Failover Clustering Featu
12) Log Off User
13) Restart Server
14) Shut Down Server
15) Exit to Command Line

Enter number to select an opt

(E)nable or (D)isable Remote Desktop? (Blank=Cancel) E
1) Allow only clients running Remote Desktop with Network Level Authentication (more secure)
2) Allow clients running any version of Remote Desktop (less secure)

Enter selection: 2

Enabling Remote Desktop...
```

Remote desktop enable's ved at trykke 7 i commando prompten. Og vælger enable.